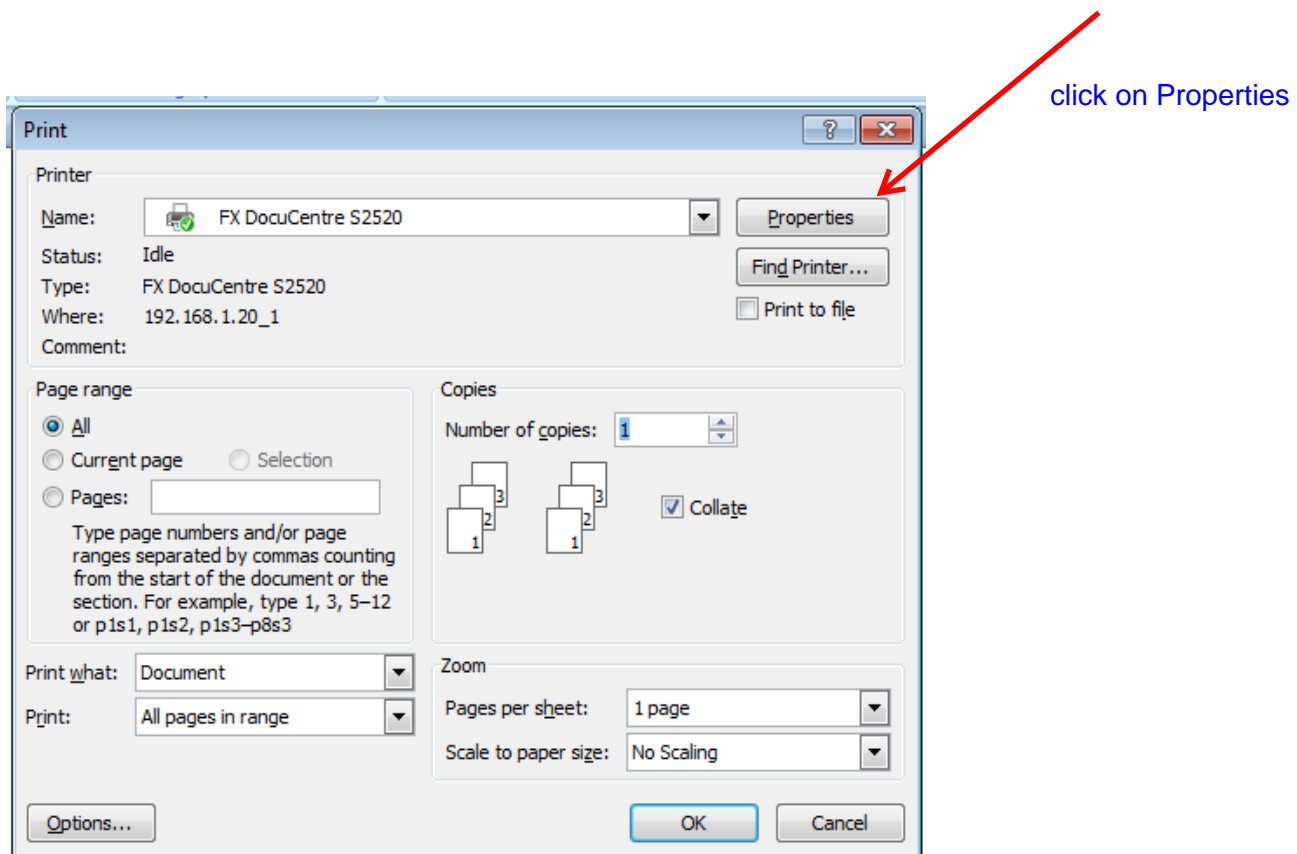


FX DocuCentre S2520 – New Lab Printer Settings

The following printer settings must be considered in order to print out in the lab successfully. Kindly follow the under-mentioned steps to change/double check printer settings before you print.

Step 1

Select **“Properties”**



Step 2

Ensure that the following settings are selected/enabled:

“Paper”: size – A4

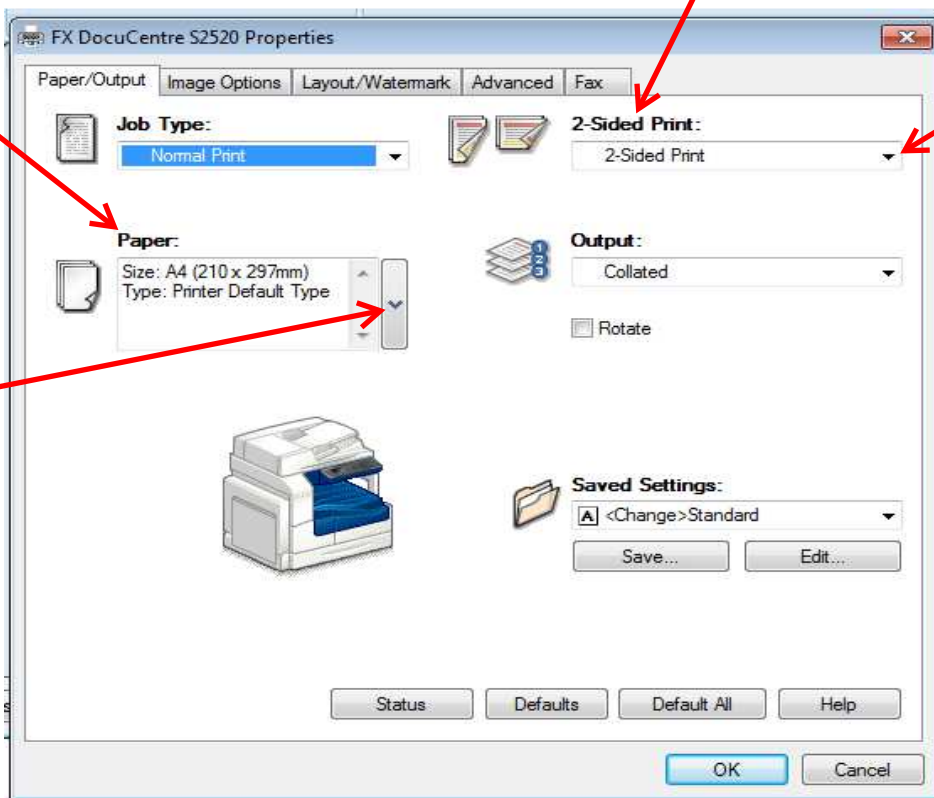
“2-Sided Print”: 2-Sided Print

A4

2-Sided Print

click on button to change setting

click on button to change setting



Step 3

On **Image Options** tab,

“Toner Saver”: Conserve Toner (box checked)

